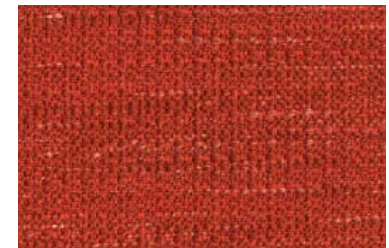
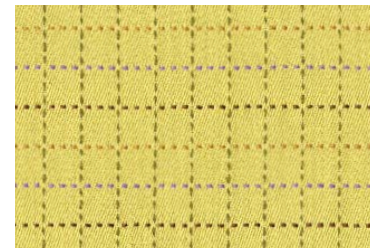


Spin2Cycle

FITNESS CENTER MANUAL

HOME2
SUITES BY HILTON



These plans have been designed in compliance with the 2010 ADA Standards for Accessible Design.

The Architect of Record must note that additional accessibility requirements may also be required by state or local codes. These plans have not been designed to incorporate any of the more stringent requirements of state or local accessibility codes or standards and the plans must be modified to meet any such codes or standards.

The term “Accessible” will be used throughout these plans to refer to the 2010 ADA Standards for Accessible Design which are mandated for places of public accommodation by Title III regulations of the ADA at 28 CFR part 36, subpart D; and must follow the 2004 ADAAG at 36 CFT part 1191, appendices B and D. The owner and Architect of Record must ensure that all modifications and changes to these plans meet or exceed the ADA and any state or local accessibility codes that are more stringent. Owner must also ensure that the facility is constructed and maintained in compliance with the ADA standards.

These plans identify ADA minimum, maximum and dimensional ranges. Architects are strongly encouraged to specify dimensions that are below the maximum, above the minimum or in the middle of ranges to account for deviations that may occur during the construction process.

Additional information regarding the ADA requirements is provided in the Hilton Accessibility Design Manual (HADM).

TABLE OF CONTENTS

INTRODUCTION	1
SECTION 1: ROOM DESIGN	2
SECTION 2: SUPPLIER CONTACTS & ORDER FORMS	9

INTRODUCTION

This guide has been created to assist you with the implementation of specific attributes of the Home2 Spin2 Cycle fitness area as outlined by Prototype 2.0. Broken down by sections, this guide will lead you through what is needed for your fitness center before placing your orders with the appropriate vendors.

FIRST: familiarize yourself with the fitness center's design and layout by reviewing section 1 of this guide.

NEXT: If your hotel's Spin2 Cycle does not identically mirror the layout shown in this guide, email a detailed sketch, or a CAD drawing to the Hilton Worldwide Global Fitness department email: fitness@hilton.com.

The submittal must include layout and elevation drawings, including wall dimensions, ceiling heights, location of doors, windows, etc.

Upon receipt of the submittal, the Hilton Worldwide Global Fitness Department will prepare a customized layout of your Spin2 Cycle area; accompanied by an itemized list of the required equipment and design elements. (The layout normally takes 8-10 business days.)

THEN: once the layout is returned, place orders directly with the vendors or simply fax the order forms as provided in section 2 of this guide. Be sure to follow up with the vendors to confirm the order status. Plan accordingly, as there is often a 6-8 week lead time on most pieces

Also, be sure to refer to the Prototypical Interior Design Specifications for detailed information regarding some of the room's required items. The list of these items can be found on the Interior Specification Matrix of this guide.

FINALLY: once the equipment is received, use the layout outlined in this book, or the customized layout from Hilton Worldwide Fitness to set up your Spin2 Cycle fitness area and complete the design.

SECTION 1: ROOM DESIGN

FITNESS ROOM LAYOUT3

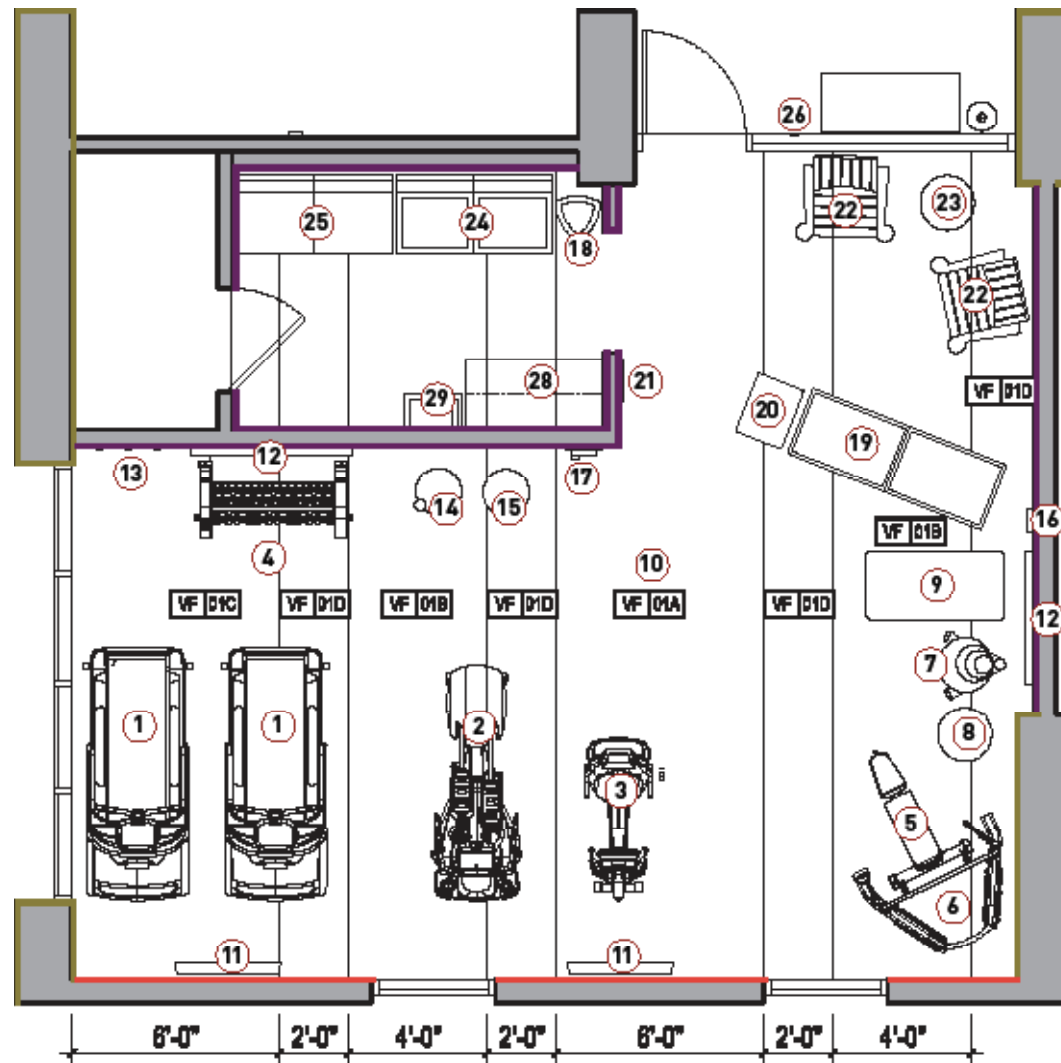
ELECTRICAL REQUIREMENTS4

ACCESSIBLE REQUIREMENTS.....5

RENDERINGS7

INTERIOR SPECIFICATIONS MATRIX8

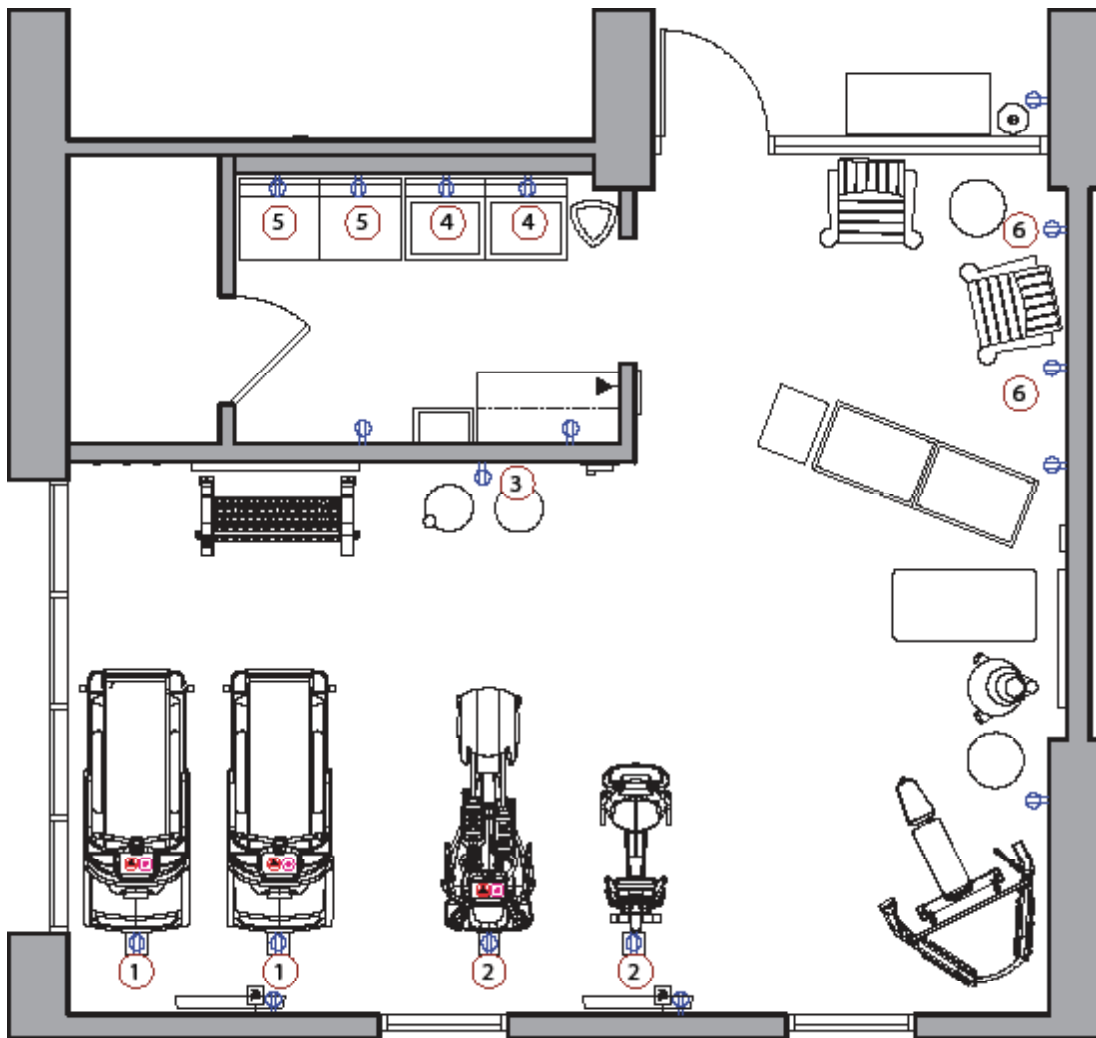
ROOM DESIGN - FITNESS CENTER LAYOUT



NOT TO SCALE

MASTER LEGEND

1. Treadmill
 2. Elliptical Fitness Trainer
 3. Recumbent Cycle
 4. Dumbbells and Rack
 5. Superbench
 6. Strength System, FTS Glide
 7. Medicine Balls and Rack
 8. Deluxe Stability Ball and holder
 9. Exercise Mats (1/2" or less thick)
 10. ECO Rubber Fitness Flooring
 11. TV Flat Panel 37" LCD
 12. Framed Wall Mirror
 13. Robe Hooks
 14. Water Cooler & Cup Dispenser
 15. Gym Wipes & Dispenser with waste can
 16. Wall Clock
 17. Emergency Phone
 18. Decorative Trash Can
 19. Towel & Folding Station w/ Brand Graphics
 20. Hamper
 21. Rules Sign
 22. Adirondack Chairs
 23. Side Table
 24. Washers
 25. Dryers
 26. Distraction Graphics
 27. Bench - Part of Hotel FF&E
 28. 34" High Accessible Work Surface - Refer to Prototype
 29. 46" High Accessible Hanging Rod
- Neutral Wallcovering
 - Accent Wallcovering
 - Accent Tile



NOT TO SCALE

POWER AND CABLE REQUIREMENTS FOR:

1. TREADMILLS

⚡ Motor: Power: Dedicated 120 Volt/ 20 Amp Circuit with 5-20R NEMA Receptacle

📺 Personal Viewing Screens: Power: Standard 110 Volt Outlet
Cable: Standard Coaxial Cable Outlet

2. ELLIPTICALS, BIKES & STEPPERS

⚡ Motor: Power: N/A- Self Powered

📺 Personal Viewing Screens: Power: Standard 110 Volt Outlet
Cable: Standard Coaxial Cable Outlet

*Feeds to Personal Viewing Screens may be daisy chained. Please contact Supplier Representative for more details

3. WATER COOLER

⚡ Power: Standard 110 Volt Outlet, 6' power cord

Water line: A dedicated 1/4" water line maybe needed depending on the water cooler option selected.

4. WASHER

⚡ Power: Dedicated 120 Volt/ 60Hz Circuit with 5-20R NEMA Receptacle or as per manufacturer recommendations

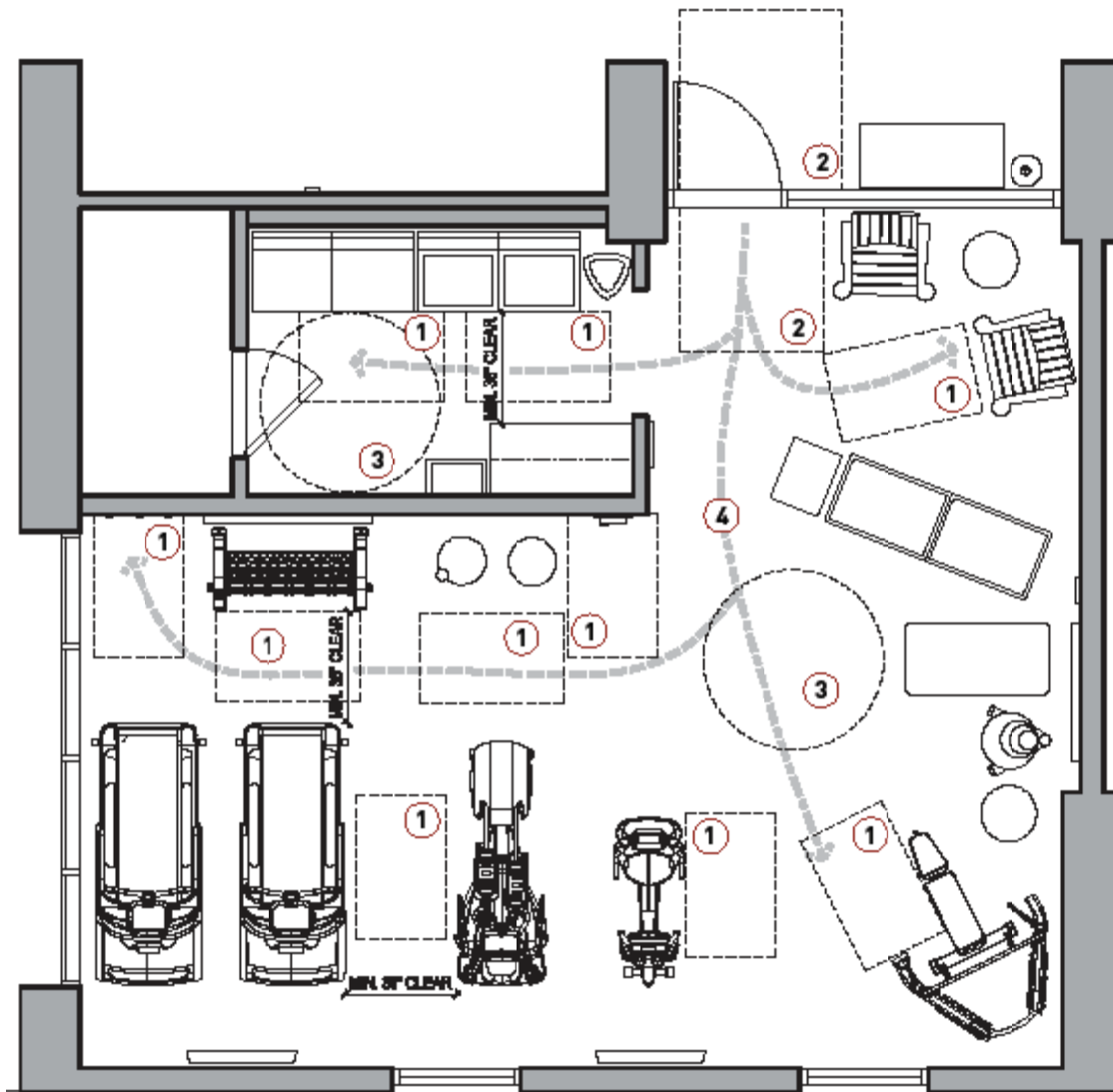
Water line: A dedicated 3/4" hot and cold water line will be required

5. DRYER

⚡ Power: Dedicated 240 Volt/ 60Hz Circuit with 5-20R NEMA Receptacle or as per manufacturer recommendations

6. CONVENIENCE OUTLETS

Must be within accessible reach range (15"-48") for guests.



NOT TO SCALE

1. REQUIRED CLEAR APPROACH AT EQUIPMENT
 - 30" by 48"
2. REQUIRED CLEAR APPROACH AT DOOR
 - pull side, 60" clearance, 18" clear from latch
 - push side, 48" clearance, 12" clear from latch
3. TURNING SPACE
 - 60" diameter
4. ACCESSIBLE ROUTE
 - Minimum 36" clear

ROOM LAYOUT AND AMENITIES

Room layout and amenities must comply with the provisions of the 2010 Americans with Disabilities Act AND Local Accessibility Requirements, whichever is more stringent.

GENERAL GUIDELINES

- There must be clear floor space provided at one of each type of equipment, at the point where a person would get on the equipment.
- Dashed areas shown are required clear floor areas that must be maintained to access equipment. Center areas on the equipment where possible.
- Door and threshold/level change to fitness center must be fully accessible.
- An accessible route must be provided to one of each type of accessible equipment and to all amenities in the room.
- Key card access at the entry door must be within accessible reach range (maximum 48" high) and have clear floor space.

ROOM DESIGN - ACCESSIBLE REQUIREMENTS (CONTINUED)

- The bottom of the wall mount TVs must be a minimum of 80" Above Finished Floor (A.F.F.). If TV must be mounted at less than 80" A.F.F., it must be out of circulation route, or it must project less than 4" from wall surface.
- All dispensers, storage, emergency phone and hooks must be within reach range (48" A.F.F. maximum) and have clear floor space for forward or side approach.
- Operating parts and volume control for emergency phone must be within reach range and operable with one hand without twisting or tight grasping.
- Maneuvering clearances must be provided on both sides of the door. Thresholds and changes of level between flooring materials may be no greater than 1/4" or up to 1/2" if sloped at 1:12. Any changes greater than 1/2" would be considered a ramp and must slope at 1:12 maximum.
- Emergency phone, chairs and robe hooks must be on accessible route.
- Controls and appliance doors for washer and dryer must comply with accessibility standards. They must be operable with one hand without twisting or tight grasping.
- Work surface in laundry room must be no more than 34" high and must have toe and knee clearance.



The renderings to the left demonstrate the look and feel of the Home2 Spin2Cycle fitness area.

FOR ALL FINAL INTERIOR SPECIFICATIONS, please refer to the Prototypical FF&E and Color Materials Specifications for detailed information and ordering.

FOR ALL FITNESS EQUIPMENT & ACCESSORIES, please refer to the next page and the order forms in Section 2: Supplier Contacts & Order Forms.



ROOM DESIGN - INTERIOR SPECIFICATION MATRIX

The requirements on this page are for dedicated fitness areas up to 500 sq. ft. Additional quantities & optional equipment listed here are required if dedicated fitness area is greater than 500 sq. ft. Consult with approved equipment supplier for equipment planning and room layout.

DESCRIPTION *FROM PROTOTYPICAL DRAWING SET	QUANTITY
--	----------

FLOORS

Rubber Flooring	per layout
Wall Base	per layout

WALLS

Vinyl Wallcovering - Neutral, *to match lobby neutral	per layout
Vinyl Wallcovering - Accent	per layout
Tile Piers	per layout

ELECTRONICS

37" Flat Panel LCD TV - Wall or Ceiling Mounted*	2
Wall Clock	1

FURNITURE & FIXTURES

Adirondack Chairs	2
Side Table	1
Laundry Folding Table + Towel Storage Unit**	2
Laundry Hamper	1
Decorative Trash Can	1
Emergency Phone	1

REFER TO THE PROTOTYPICAL INTERIOR SPECIFICATIONS FOR DETAILED INFORMATION

* If all cardio equipment pieces have personal viewing screens, only (1) TV is required in Spin2Cycle. It is then moved to the strength training area.

**Towel storage unit must meet reach range standards. Some of each type of element provided in towel storage unit must be provided within a complaint reach range.

DESCRIPTION	QUANTITY
-------------	----------

CARDIO

Treadmill	2
Elliptical Fitness Trainer	1
Cycle, Recumbent	1
Personal Viewing Screens (PVS)	optional
Ear Buds	if using PVS

STRENGTH

Dumbbells - 10 Pair Set (5-50 lb pairs)	1
Dumbbell Rack	1
Adjustable Flat Bench	1
Dual Pulley Strength System w/ required accessories	1

CORE & BALANCE

Medicine Balls & Rack Set	1
Deluxe Stability Ball (65 cm)	1
Stability Ball Base/Holder	1
Exercise Mats	2

ACCESSORIES

Robe Hooks (3)	1
Water Cooler & Cup Dispenser	1
Gym Wipes & Dispenser with waste can	1
Rules Sign	1
Brand Graphic at Towel & Folding Station	1
Mirror Frame	2

REFER TO ORDER FORMS IN BACK FOR DETAILED INFORMATION

SECTION 2: SUPPLIER CONTACTS & ORDER FORMS

SUPPLIER CONTACTS FOR:

Prototypical Interior Specifications.....	10
Equipment & Accessories	11

ORDER FORMS

Precor	12
Star Trac.....	14
Spri.....	16
Framed Mirrors (Specification Form)	17
HD Supply	18
2xl.....	20
Aquaverve.....	22
Hotel Signs.....	25

SUPPLIER CONTACTS - FOR PROTOTYPICAL INTERIOR SPECIFICATIONS

ALL INTERIOR SPECIFICATION ORDERS REQUIRE THE APPROPRIATE SPECIFICATION PRIOR TO CALLING THE REPRESENTATIVE BELOW.*

REFER TO PROTOTYPICAL FF&E AND CPM SPECIFICATIONS FOR MORE INFORMATION. REPRESENTATIVES DO NOT HAVE SPECIFICATIONS ON HAND.

PRODUCT	TAG/SPEC NUMBERS	CONTACT	PHONE	EMAIL	FAX
FLOORS					
ECO Rubber Fitness - Orange***	VF-01 A	Evelyn Orozco	626 797-0297	evelyn@dmfloors.com	
ECO Rubber Fitness - Lt Grey***	VF-01 B	Evelyn Orozco	626 797-0297	evelyn@dmfloors.com	
ECO Rubber Fitness - Dk Grey***	VF-01 C	Evelyn Orozco	626 797-0297	evelyn@dmfloors.com	
ECO Rubber Fitness - Teal***	VF-01 D	Evelyn Orozco	626 797-0297	evelyn@dmfloors.com	
Wall Base	VB-03	Dave Armstrong	800 537-9527 x4809	sales@roppe.com	419 435-1056
WALLS					
Vinyl Wallcoverings	WC-10 & WC-06	Kathy McFall	800 222-7866	mcfall@eykon.net	901 366-0447
Tile Piers	CT-03 & CT-04	Tony Butlin	617 666-7900 x12	tbutlin@stonesource.com	617 666-7901
ELECTRONICS					
37" LCD TV	EQ-4900	Jim Krawczyk	847-546-9600	jim.krawczyk@lge.com	847-546-9602
Wall Clock	IF-1001	Mark Edwards	562 242-9573	mark.edwards@officedepot.com	562 490-9057
MIRROR					
Framed Mirror	IF-1077	ITEM TO BE SOURCED LOCALLY: SEE SPECIFICATION PAGE FOR FURTHER INFORMATION			
FURNITURE & FIXTURES					
Adirondack Chairs (2)	IF-1042	Jennifer Hill	800 380.9115	jhill@pollywoodtrade.com	574 457.4723
Side Table	IF-1019	Paul Manaker	201 567.2000 ext 4039	paul@walterswicker.com	201 567.8668
Laundry Folding Table Unit**	IF-1026	Stephanie Sosa	714 999.0100 ext 220	stephanie@klh.com	714 999-2152
Laundry Hamper	(HAMP-01) EQ-4217	Joann Svoboda	732 972-1440 ex 210	joann.svoboda@erwyn.com	732 972-1263
Decorative Trash Can	EQ-4204	Robert J. Gonzalez	800 282-4816 ext 128	rgonzalez@guestsupply.com	951-280-4269
Emergency Phone - wall mounted	Contractor Provided	-----	-----	-----	-----

* Recommended vendors/sources

**Intermetro unit may only be purchased via purchasing company or distributor, and not factory/manufacturer direct. Table height may not exceed 34" A.F.F. compliant knee and toe clearance must be provided.

***Transition to rubber tiles may be no greater than 1/4" or up to 1/2" if sloped at 1:12. Any changes greater than 1/2" would be considered a ramp and must slope at 1:12 maximum.

SUPPLIER CONTACTS - FOR EQUIPMENT & ACCESSORIES

FOR QUESTIONS REGARDING SPECIFIC PRODUCTS PLEASE CONTACT THE APPROPRIATE REPRESENTATIVE LISTED BELOW.

Order forms are provided on the following pages for ordering.

PRODUCT: TAG/SPEC NUMBERS	PRODUCT/SUPPLIER	CONTACT	PHONE	EMAIL	FAX
---------------------------	------------------	---------	-------	-------	-----

SIGN & GRAPHIC					
RULES SIGN / EQ-4218	HOTEL SIGNS	Sandy Dalton	601 898-8393	sandy@hotelsigns.com	601 898-8397
BRAND GRAPHIC AT TOWEL & FOLDING STATION					

WATER COOLER (order info attached) - Aquaverve required per standards					
EQ-4023	AQUAVERVE, LLC	Customer Service	732 733-2207	hiltonprogram@aquaverve.com	908 248-2801

SANITIZING WIPES AND ACCESSORIES (order info attached)					
EQ-4205	2XL	Customer Service	888 977-3726	sales@2xlcorp.com	708 344-4095

ROBE HOOKS (order info attached)					
EQ-4017	HD SUPPLY FACILITIES MAINTENANCE, LTD.	Paul Worthington	800 999-4948 x7715	paul.worthington@hdsupply.com	800 698-8536

FITNESS EQUIPMENT NOTE: Fitness Equipment must be purchased from approved vendors listed below (Precor or Star Trac as required by standards), property to choose from which vendor to purchase					
BIKE / EQ-4208	PRECOR	Kim Burlingham	425 482-5796	hiltonsales@precor.com	425 398-4330
TREADMILL (2) / EQ-4206					
ELLIPTICAL / EQ-4207	STARTRAC	Jeff Josephson	206 954-8597	jjosephson@startrac.com	

CORE & BALANCE EQUIPMENT, FREE WEIGHTS, HEADPHONES					
STABILITY BALL / EQ-4215	SPRI	Customer Service	800 222-7774 extension 7910	hilton@spri.com	847 680-7550
MEDICINE BALLS / EQ-4214					
MED. BALL RACK / EQ-4213					
EXERCISE MAT / EQ-4216					
EAR BUDS					

STEP 1: CARDIO EQUIPMENT — Based on your layout, the following number of units are required:

CARDIO EQUIPMENT	NUMBER OF UNITS REQUIRED
TREADMILL	
ELLIPTICAL FITNESS CROSSTRAINER	
RECUMBENT CYCLE	

PROPERTY INN CODE

STEP 2: SELECT YOUR CARDIO & STRENGTH EQUIPMENT MODELS — Based on the number of units required, select Cardio & Strength Equipment Models

TREADMILL *PVS (PERSONAL VIEWING SCREEN)	QUANTITY	LIST PRICE	HILTON PRICE	TOTAL
932i: Minimum Standard with PVS				\$
954i: Optional Upgrade with PVS				\$
932i: Minimum Standard				\$
954i: Optional Upgrade 1				\$

ELLIPTICAL *PVS (PERSONAL VIEWING SCREEN)	QUANTITY	LIST PRICE	HILTON PRICE	TOTAL
EFX 534: Minimum Standard with PVS				\$
EFX 556: Optional Upgrade 1 with PVS				\$
EFX 576i: Optional Upgrade 2 with PVS				\$
EFX 534: Minimum Standard				\$
EFX 556: Optional Upgrade 1				\$
EFX 576i: Optional Upgrade 2				\$

RECUMBENT CYCLE *PVS (PERSONAL VIEWING SCREEN)	QUANTITY	LIST PRICE	HILTON PRICE	TOTAL
RBK: 815 Minimum Standard with PVS				\$
RBK: 815 Minimum Standard				\$

STRENGTH EQUIPMENT	QUANTITY	LIST PRICE	HILTON PRICE	TOTAL
DUMBBELL RACK - 813				\$
DUMBBELLS - G827U-HC (5 - 50lb. set)				\$
SUPERBENCH - CW119				\$
FTS GLIDE - S3.23				\$
COST OF CARDIO & STRENGTH EQUIPMENT**				\$

PROPERTY INN CODE

STEP 3: FILL IN BILLING AND SHIPPING DETAILS

BILL TO:	
Name:	
Company:	
Address:	Zip:
City:	
State:	
Phone:	
Email:	

SHIP TO:	
Name:	
Company:	
Address:	Zip:
City:	
State:	
Phone:	
Email:	

STEP 4: SEND COMPLETED FORMS TO PRECOR (Contact information below)

CONTACT:	Kim Burlingham
EMAIL:	Kim.Burlingham@precorsales.com or hiltonsales@precorsales.com
FAX:	425 398-4330
PHONE:	425 482-5796

PROPERTY INN CODE

STEP 1: SELECT YOUR CARDIO EQUIPMENT

TREADMILL	QUANTITY	LIST PRICE	HILTON PRICE	TOTAL
TREADMILL - S-TRx Minimum Standard				\$
TREADMILL - S-TRx with Personal Viewing Screen Optional Upgrade 1				\$

STEP 2: SELECT YOUR TOTAL BODY TRAINER/ELLIPTICAL

TOTAL BODY TRAINER/ELLIPTICAL	QUANTITY	LIST PRICE	HILTON PRICE	TOTAL
TOTAL BODY TRAINER - S-TBTx Minimum Standard				\$
TOTAL BODY TRAINER - S-TBTx with Personal Viewing Screen Optional Upgrade 1				\$

STEP 3: SELECT YOUR RECUMBENT BIKES

RECUMBENT BIKES	QUANTITY	LIST PRICE	HILTON PRICE	TOTAL
RECUMBENT BIKE - S-RBx Minimum Standard				\$
RECUMBENT BIKE - S-RBx with Personal Viewing Screen Optional Upgrade 1				\$

STEP 4: SELECT YOUR STRENGTH EQUIPMENT

STRENGTH EQUIPMENT	QUANTITY	LIST PRICE	HILTON PRICE	TOTAL
DUMBBELLS (5 - 50lb. set)				
INSTINCT 3 TIER DUMBBELL RACK 9IN-R8002				\$
INSTINCT MULTI-ADJUSTABLE BENCH				\$
INSTINCT DUAL ADJUSTABLE PULLEY 9IN-D2002				\$
COST OF CARDIO & STRENGTH EQUIPMENT**				\$

PROPERTY INN CODE

STEP 3: FILL IN BILLING AND SHIPPING DETAILS

BILL TO:	
Name:	
Company:	
Address:	Zip:
City:	
State:	
Phone:	
Email:	

SHIP TO:	
Name:	
Company:	
Address:	Zip:
City:	
State:	
Phone:	
Email:	

STEP 4: SEND COMPLETED FORMS TO STAR TRAC (Contact information below)

CONTACT:	Jeff Josephson
EMAIL:	jjosephson@startrac.com
PHONE:	206 954.8597

ORDER FORM - SPRI

PROPERTY INN CODE

STEP 1: SELECT YOUR STRENGTH EQUIPMENT:

STRENGTH ACCESSORIES	CODE	QUANTITY	UNIT PRICE	TOTAL
FTS Glide - 5 Piece Attachment Set - PRECOR ONLY	MBA-SET-H			\$

STEP 2: SELECT NUMBER OF REQUIRED ITEMS BELOW:

CORE & BALANCE (REQUIRED ITEMS)	CODE	QUANTITY		TOTAL
Deluxe Stability Ball (65c)	SXBE65R			\$
Deluxe Stability Ball Base	XB-BASE			\$
Stability Ball Pump	RPAP			\$
Premium Exercise Mat	AR-PBL			\$
Medicine Balls And Rack (2 - 8lb. Dual Grip)	MED-SET-H			\$
FITNESS ACCESSORIES	CODE	QUANTITY		TOTAL
Sennheiser Ear buds (50 PACK, FOR PVS CARDIO UNITS)	07-70033			\$
TOTAL COST PRIOR TO SHIPPING & HANDLING**				\$

STEP 3: FILL IN BILLING AND SHIPPING DETAILS

BILL TO:	
Name:	
Company:	
Address:	Zip:
City:	
State:	
Phone:	
Email:	

SHIP TO:	
Name:	
Company:	
Address:	Zip:
City:	
State:	
Phone:	
Email:	

STEP 5: SEND COMPLETED FORMS TO SPRI (Contact information below)

CONTACT:	Customer Service
EMAIL:	Hilton@spri.com
FAX:	847 680-7550
PHONE:	800 222-7774

SPECIFICATION FORM - FRAMED MIRROR

The Framed Mirrors must be sourced locally. Use this specification form for compliance to Brand standards.

STAIN COLOR

YOUR REQUIRED STAIN COLOR IS:

Dark Chocolate

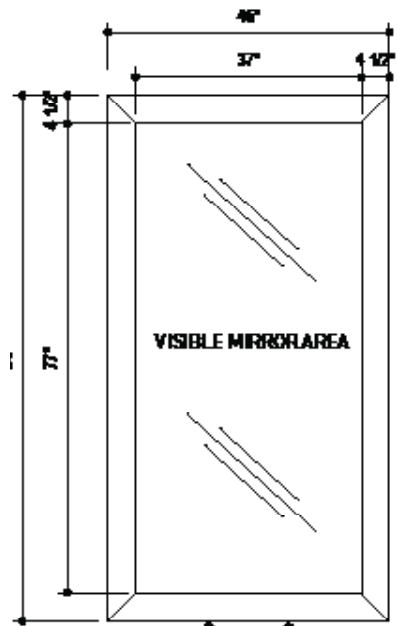
MIRROR DIMENSIONS

A TOTAL OF 2 MIRRORS ARE NEEDED FOR A STANDARD FITNESS AREA

OUTSIDE DIMENSION: 46" by 86" by 4"

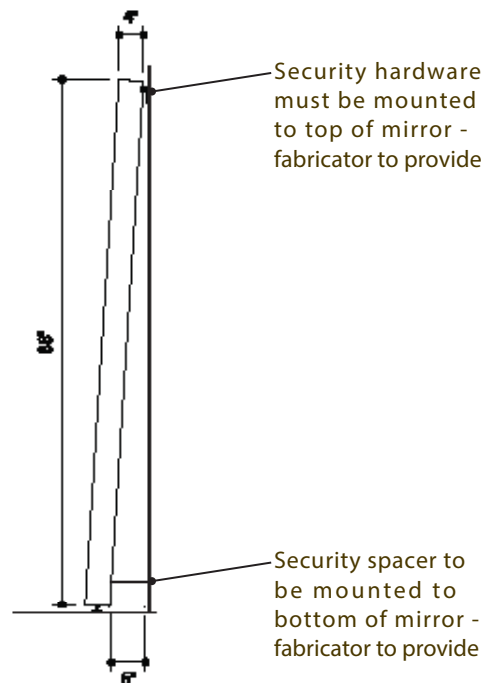
MIRROR DIMENSION: 38" by 78" by 1/4"

FRAME DIMENSION: 4 1/2" by 4" FLAT FACE RAIL (enough rail will need to be purchased to cover 4 typical sides of each mirror)



DRAWING SCALE: NTS

FRONT VIEW



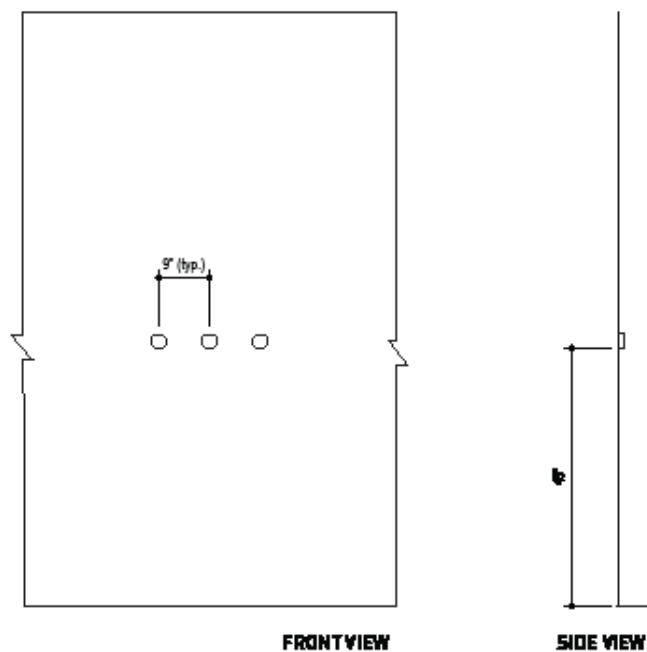
SIDE VIEW

PLEASE NOTE:

- Must provide three point or continuous clear security cleating system appropriate for the size and weight of the mirror. Must provide all component parts for complete assembly and installation.
- Must provide inner frame and cross bracing.
- Must provide 1/4" (6mm) backer sheet (gator foam or tempered masonite).
- Must finish inside lip of frame (as it will reflect in the mirror).



DARK CHOCOLATE
FRAME COLOR



FORTE SCULPTED ROBE HOOK

Same product as specified in guest bathroom.

DETAILS FOR HOOKS:

- Dimensions: 2-11/16"W x 2-5/8"D x 2-1/2" H
- Finish: brushed nickel
- Mounting Height: 46" A.F.F.
- Spacing: 9" on center
- All materials used must be contract quality and suitable for heavy commercial use.
- All materials and methods of construction must comply with state, local, fire and life safety codes and Home2 Suites standards.

FOR MORE INFO

CONTACT: PAUL WORTHINGTON

CALL: 800 999 4948 x7715

EMAIL: PAUL.WORTHINGTON@HDSUPPLY.COM

ORDER FORM - HD SUPPLY FACILITIES MAINTENANCE, LTD.

PROPERTY INN CODE

STEP 1: IDENTIFY QUANTITY NEEDED

MINIMUM REQUIRED IS 3:

STEP 2: SELECT ACCESSORY

PRODUCT	DESCRIPTION	SIZE	QUANTITY	UNIT PRICE	TOTAL
Forté Sculpted Robe Hook	Robe Hooks w/ brushed nickel finish	2-11/16"W x 2-5/8"D x 2-1/2"H		\$	\$
TOTAL COST PRIOR TO SHIPPING & HANDLING**				\$	

STEP 4: FILL IN BILLING AND SHIPPING DETAILS

BILL TO:	
Name:	
Company:	
Address:	Zip:
City:	
State:	
Phone:	
Email:	

SHIP TO:	
Name:	
Company:	
Address:	Zip:
City:	
State:	
Phone:	
Email:	

STEP 5: SEND COMPLETED FORM TO HD SUPPLY (Contact information below)

CONTACT:	Paul Worthington
EMAIL:	paul.worthington@hdsupply.com
FAX:	800 698 8536
PHONE:	800 999 4948 x7715

PROPERTY INN CODE

STEP 1: SELECT YOUR WIPES

GYMWIPES ANTI-BACTERIAL FORCE - MRSA, H1N1 KILLER	CODE	QUANTITY	UNIT PRICE	TOTAL
GW Anti-Bacterial FORCE Bucket: 800ct srp 36.95	2XL-400			\$
GW Anti-Bacterial FORCE Bag: 800ct Case of 2	2XL-401			\$
GYMWIPES ANTI-BACTERIAL FORMULA	CODE	QUANTITY	UNIT PRICE	TOTAL
GW Anti-Bacterial Bucket: 700ct srp 34.95	2XL-100			\$
GW Anti-Bacterial Bag: 700ct srp 29.95	2XL-101			\$
GYMWIPES PROFESSIONAL ADVANTAGE, MEGAROLL FORMULAS	CODE	QUANTITY	UNIT PRICE	TOTAL
GW Professional Bucket: 700ct srp 34.95	2XL-37			\$
GW Professional Bag: 700ct srp 29.95	2XL-38			\$
GW Advantage 900ct 4 bags/case only srp 75.80	2XL-36			\$

STEP 2: SELECT YOUR ACCESSORIES

STAINLESS STEEL ACCESSORIES	CODE	LIST PRICE	HILTON PRICE	TOTAL
*Stainless Steel Stand + Waste Can srp 299.95	2XL-65			\$
*Stainless Steel Stand w/ Door + Waste Can srp 399.95	2XL-63			\$
*Due to increasing raw materials costs, stainless pricing is subject to change without notice. Pricing reviewed every 30 days.				
TOTAL COST PRIOR TO SHIPPING & HANDLING**				\$

PROPERTY INN CODE

STEP 3: FILL IN BILLING AND SHIPPING DETAILS

BILL TO:	
Name:	
Company:	
Address:	Zip:
City:	
State:	
Phone:	
Email:	

SHIP TO:	
Name:	
Company:	
Address:	Zip:
City:	
State:	
Phone:	
Email:	

STEP 4: SEND COMPLETED FORMS TO 2XL (Contact information below)

CONTACT:	Customer Service
EMAIL:	sales@2xlcorp.com
FAX:	708 344-4095
PHONE:	708 344-4090



****Model: S2**
Colors: Stainless Steel
Height: 51.5"
Diameter: 12 5/8"
Weight: 45 lbs.
ADA Compliance:
Top/Bottom Faucet Height: 28"-31"
Faucet-Drip Tray Clearance: 6"
Water Flow Depth: 1"
 * Stainless steel cup dispenser
 available for use with this model.



****Model Name: Pacifik**
Colors: Silver/Black,
Height: 58.25"
Diameter: 12 5/16"
Weight: 40 lbs.
ADA Compliance:
Top/Bottom Faucet Height: 32"-34"
Faucet-Drip Tray Clearance: 6"
Water Flow Depth: 1"



****Model Name: Celsius**
Colors: Brushed Aluminum
Height: 51.75"
Diameter: 12 5/8"
Weight: 45 lbs.
ADA Compliance:
Top/Bottom Faucet Height: 28"-31"
Faucet-Drip Tray Clearance: 6"
Water Flow Depth: 1"

**** All controls are operable with one hand and do not require tight pinching and twisting of the wrist to operate.**

AQUAVERVE DESIGNER WATER COOLERS

All models available for use with 5 gallon bottles or in bottleless configurations with filtration.

DETAILS FOR ALL MODELS:

- 2" all sides for ventilation
- Available in Room Temp/Cold or Hot/Cold
- Stainless steel water reservoir(s)
- Adjustable cold water temp
- Power switch for hot water
- Hot water safety faucet
- 5 year warranty on refrigeration system
- Bottled: uses standard 5 gal bottles, includes no-spill system
- Bottleless: includes 1 year filtration system built-in

FOR MORE INFO

CALL: 732 733-2207

EMAIL: HiltonProgram@Aquaverve.com

PROPERTY INN CODE

STEP 1: SELECT YOUR WATER COOLER

MODEL	COLOR (circle one)	QUANTITY	HILTON PRICE	TOTAL
S2 Stainless Steel	Stainless Steel			\$
Celsius Fluted Aluminum	Brushed Aluminum			\$
Pacifik High Tech HDPE	Silver/Black			\$
ACCESSORIES		QUANTITY	HILTON PRICE	TOTAL
Bottleless Configuration				\$
Cup Dispenser (standard)				\$
Cup Dispenser (stainless steel, S2 model only)				\$
Replacement Filter Set (bottleless only)				\$
Standard Cups (box of 2,500)				\$
SHIPPING		QUANTITY	HILTON PRICE	TOTAL
Water Cooler				\$
Bottleless Configuration				\$
Cup Dispenser				\$
All other items already include shipping				
TOTAL COST FOR WATER COOLER				\$

PROPERTY INN CODE

STEP 3: FILL IN BILLING AND SHIPPING DETAILS

BILL TO:	
Name:	
Company:	
Address:	Zip:
City:	
State:	
Phone:	
Email:	

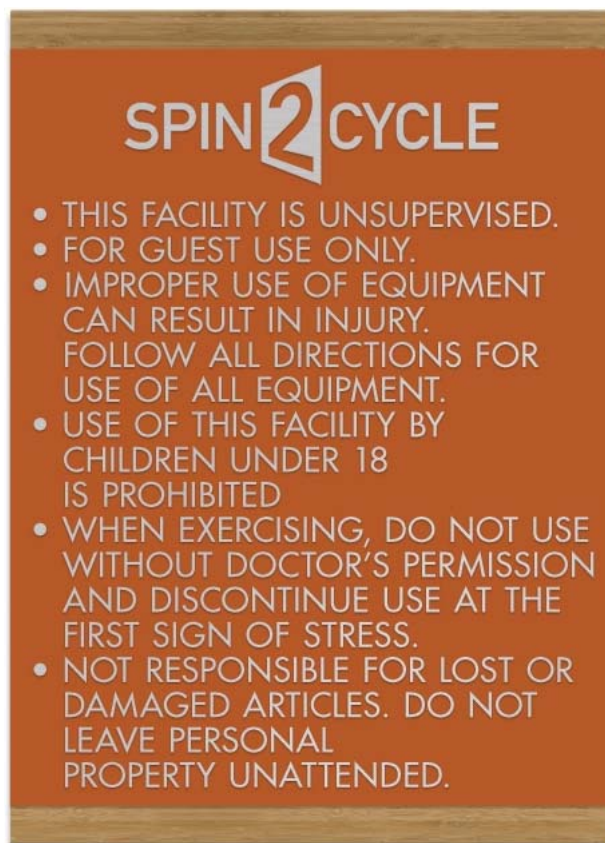
SHIP TO:	
Name:	
Company:	
Address:	Zip:
City:	
State:	
Phone:	
Email:	

STEP 4: SEND COMPLETED FORMS TO AQUAVERVE (Contact information below)

CONTACT:	Customer Service
EMAIL:	hiltonprogram@aquaverve.com
FAX:	908 248-2801
PHONE:	732 733-2207



Brand Graphic at Towel & Folding Station



Spin 2 Cycle Rules Sign

- Informational signage must comply with accessibility standards for contrast between letters and background and letter size and have raised lettering.

To purchase Rules Sign and Brand Graphic at Towel and Folding Station, please go to:

<http://www.hotelsigns.com/home2suites>

FOR MORE INFO

CONTACT: SANDY DALTON

CALL: 601 898 8393

EMAIL: SANDY@HOTELSIGNS.COM